

Intelligent Traffic Solutions

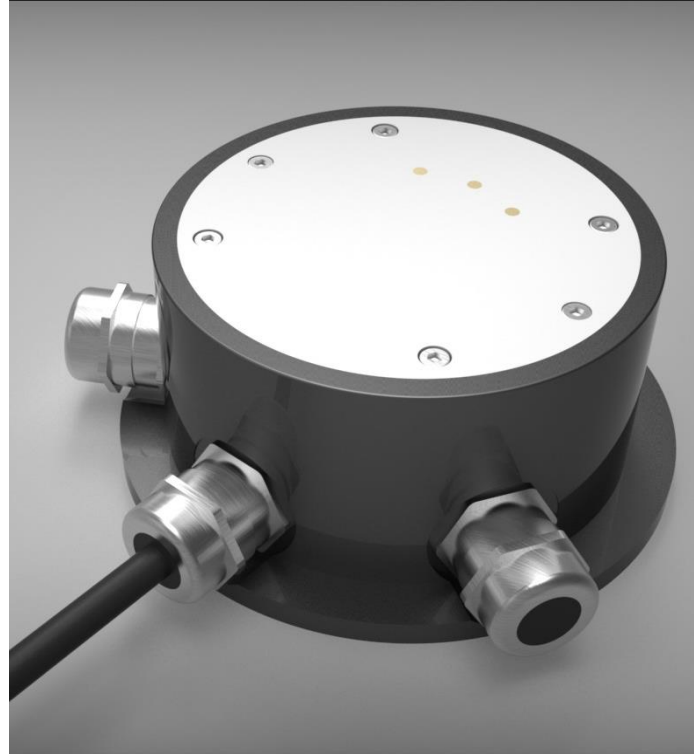
Passive Road Surface Sensor METEOS 201

ORT/SD-METEOS 101

Ortana METEOS 201 is a sensor that makes measurements of road surface. The two part housing design allows the combined sensor/electronics unit to be removed for maintenance or calibration at any time.

From measurements taken;

- Temperatures
- Conductivity
- Percent Salt
- Freezing Temperatures
- Road Condition
- Water Height



General Information

Interface	: RS485 Semi-Duplex Wire
Power Supply	: 9-24 VDC, Nominal 24V
Dimension	: Ø100 (on road surface) - 120 (bottom) / 53 (h) mm
Sensed Conditions	: Dry / Damp / Iced or Snowy / Damp to Frost
Road Surface Conditions	: Dry / Damp / Wet
Road Surface Slipperiness	: No Ice / Snowy / Snowy or Frozen Rain / Iced
Protection Class	: IP66
Storage Temperature	: -40 to +80°C
Operating Temperature	: -40 to +80°C
Operating Damp Range	: 0 to 100% RH
Connector	: From Cable 4x0.5mm ² to 4x0.75 mm ²
Weight	: Approx.800 g (Not included cable)

Technical Specifications

Road Surface and Depth Measurements

Principle	: NTC
Measurement Range	: Between -40°C and +80°C
Accuracy	: $\pm 0.1^{\circ}\text{C}$ (-20 to +20°C), else ± 0
Resolution	: 0.1

Freezing Point

Measuring Range	: -30 to 0°C
Accuracy	: $\pm 0.5^{\circ}\text{C}$ (0 to -2.5°C) If the value is in out of the range, twenty percent of average (NaCl salt based)
Resolution	: 0.1

Water Height

Measurement Range	: Between 0.6mm and 4 mm
Accuracy	: $\pm(0.1 \text{ mm} + \%20 \text{ of measurement})$
Resolution	: 0.01 mm

Slipperiness Measurement (From Slippery to dry)

Measurement Range	: 0 to 1
-------------------	----------

Ice Rate

Measurement Range	: 0 to 100%
-------------------	-------------

Accessories

10 meters length Connection cable (Included)