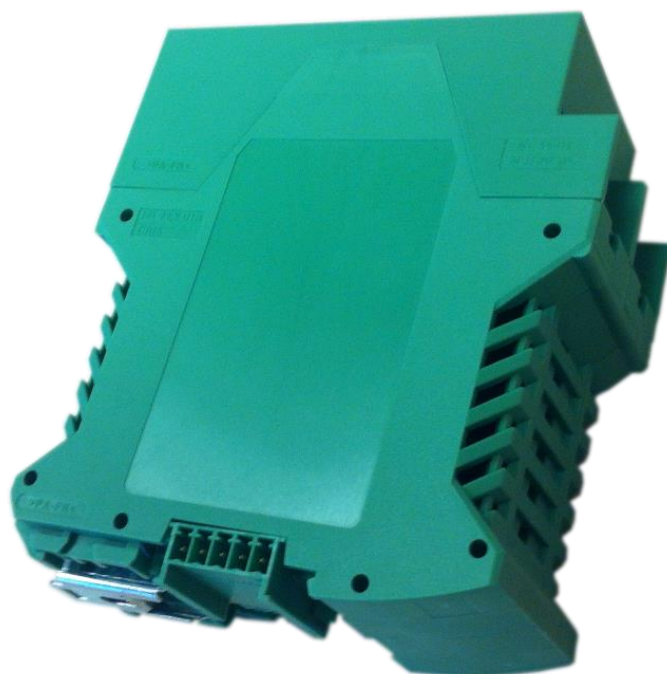


Intelligent Traffic Solutions

# DATA LOGGER METEOS 901

ORT/SD-METEOS 901



# ortana

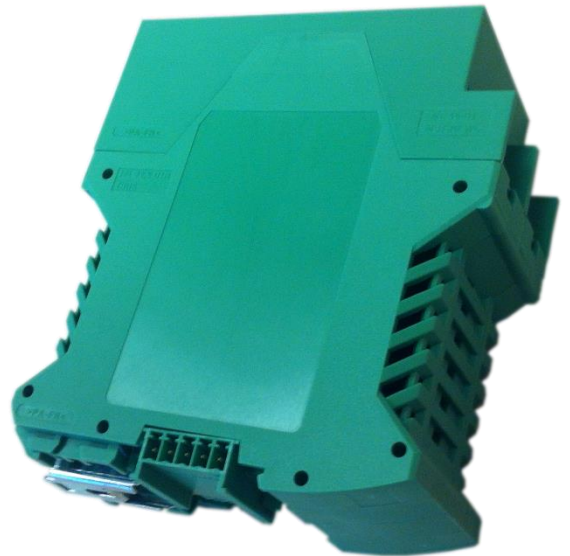
## Intelligent Traffic Solutions

# Data Logger METEOS 901

ORT/SD-METEOS 901

Ortana Data Logger is a control and storage unit for Integrated Weather Station, Visibility Sensor and Passive Road Surface Sensor. The METEOS 901 is designed to be used in control cabinets for electronic data-processing and storage.

- Especially built for Meteorology Cabinets
- Ideal for Data Processing and Storage
- Ergonomic, Compact and Rail Mounted Design
- Simple Installation
- No Maintenance Requirement
- Internal Temperature Sensor
- Internal GPS Sensor (Optional)
- Internal GSM/GPRS-HSPA (Optional)
- 8 GB SD Card Support (268 Million Data Records)
- Both Proprietary (TCP/IP, Modbus, Profibus) and Open (NTCIP) Communication Protocols
- WEB Based User Interface
- Internal Diagnostics for Sensor Fault, Low Battery, Communication and Power Losses
- Internal Power Backup Unit for Data Losses
- Very High MTBF
- Integrated Weather Station, Visibility Sensor and Passive Road Surface Sensor, all of them are controlled by only one unique control unit via Isolated RS485 port.



## Mechanical Specifications

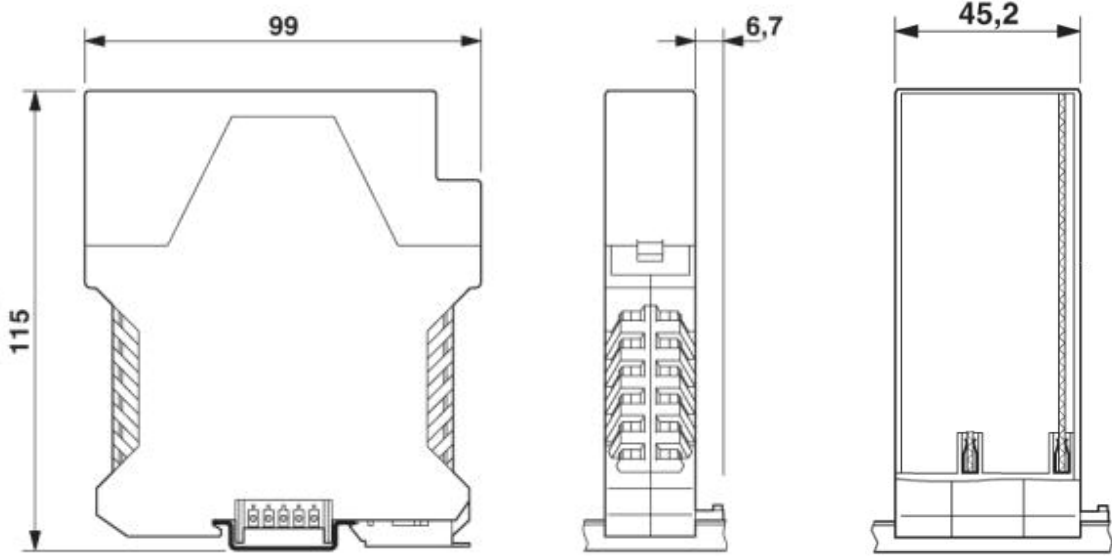
Mechanical Dimension : 99 (w) x 115 (h) x 45 (d) mm

Housing Material : Plastic

Housing : Flame Retardant, Halogen & Phosphorus free

Color : Green (6021)

Weight : Approx. 600 gr



## Electronics Specifications

Control Unit : 32 Bit Microcontroller, RTC Module

Clock Speed : 66 MHz (54 MIPS)

Internal Flash Memory : 2 MB / 4MB

External Memory : 8 GB SD Card ( max. 32 GB)

Storage Rate : 1 to 30 min, 1 to 24h

Interfaces : Ethernet (RJ45) (Parameters are controlled/managed via WEB-GUI)  
Isolated RS-485 Half Duplex (up to 115200bps for Sensors)

Supported Protocols : NTCIP, TCP/IP, Modbus, Profibus

Operating Temperature : - 40°C to +80°C

Operating Humidity : %0-100 Relative Humidity

Power Demand : 15 – 24 Vdc +/- 10%

Power Consumption : < 8W